

Working principle diagram of excavator solar container device





Working principle diagram of excavator solar container device



Study on Design of Working Device and Hydraulic System of Hydraulic

In this paper, the concept of mechanical design, manufacturing and construction in the new era is expounded, and the principle and application of intelligent technology are analyzed for ...

12 Tips to Lift Safely with Backhoes and Excavators

Using backhoes and excavators on sites to lift and place heavy construction materials saves time and money, but doing the job safely demands special care. "A variety of concerns come ...



Excavators , McGraw-Hill Education

AccessEngineering is an award-winning engineering reference and teaching platform that delivers world-renowned, interdisciplinary engineering content integrated with analytical teaching and learning tools.

An Excavator: what it consists of and how do its mechanisms work -

...

The Working Principle and Basic Construction of Excavator A single-bucket excavator is the most popular type of ground-digging machinery for



construction sites and mining sites when ...

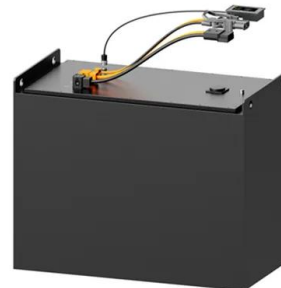


WORKING PRINCIPLE DIAGRAM OF EXCAVATOR ENERGY STORAGE DEVICE

Working principle diagram of light energy storage A solar cell (also known as a photovoltaic cell or PV cell) is defined as an electrical device that converts light energy into electrical energy through the ...

The working principle of a solar still (Johnson et al. 2019)

Download scientific diagram , The working principle of a solar still (Johnson et al. 2019) from publication: Historic review and recent progress in internal design ...



Structure And Working Principle Of Excavator

Structure And Working Principle Of Excavator Jun 18, 2018 Hydraulic excavator mainly consists of engine, hydraulic system, working device, walking device and electric control. The hydraulic system ...



WORKING PRINCIPLE DIAGRAM OF EXCAVATOR ENERGY ...

A solar cell (also known as a photovoltaic cell or PV cell) is defined as an electrical device that converts light energy into electrical energy through the photovoltaic effect.



Solar Cell: Working Principle & Construction (Diagrams ...

Solar Cell Definition: A solar cell (also known as a photovoltaic cell) is an electrical device that transforms light energy directly into electrical energy ...



Basic structure and working principle of excavator

The overall structure of a single-bucket hydraulic excavator includes power unit, working device, slewing mechanism, control mechanism, transmission system, traveling mechanism and ...



Daewoo Daios Doosan Solar Series Track Excavators ...

This set includes Shop Manual and Operation & Maintenance Manual for Daewoo Daios Doosan Solar Series Track Excavators. These manuals contain detailed ...





Basic structure and working principle of excavator

4. Rotary mechanism The slewing mechanism rotates the working device and the upper turntable to the left or right for excavation and unloading. The slewing device of a single-bucket ...



Solar Power Plants: Types, Components and Working Principles

Solar power plants are systems that use solar energy to generate electricity. They can be classified into two main types: photovoltaic (PV) power plants and concentrated solar power (CSP) ...

How Do Mobile Solar Containers Work Efficiently? A Real Look at ...

How do mobile solar containers work efficiently? Discover how smart EMS, battery optimization, and folding solar panels deliver clean, off-grid power anywhere.



Structure and working principle of excavators

The structure of excavators can be divided into three parts: attachment, upper frame and under carriage. Main working attachment contains stick cylinder, boom, boom cylinder, stick, bucket ...

