

The trolley switch cannot store energy





Overview

In 2019, SFMTA discovered their historic cable cars were wasting 18% more energy than modern systems—all because switches couldn't recover braking energy. The fix?

Installing ultracapacitors at key junctions, cutting energy waste by 31% in six months. But in the world of urban transportation and electrical engineering, this limitation is very real—and surprisingly impactful. The inability of a switch to store energy lies in its function as a control device, not a storage medium, 2. While the trolley switch itself remains energy-storage challenged, adjacent technologies are picking up the slack: Portugal's capital recently tested trolleys with roof-mounted solar panels. Trolley circuit breakers operate by using electromagnetic mechanisms, which allow them to store energy efficiently, distinctively through mechanical compression, and spring action; hence, it utilizes both kinetic and potential energy principles.



The trolley switch cannot store energy



Reasons why the switch cannot automatically store energy

The energy storage switch does not store energy due to several fundamental reasons, including design limitations, inadequate capacity, and operational inefficiencies. 1.

Energy Saving Potential of a Battery-Assisted Fleet of Trolley Buses

The simulation with only battery- assisted trolley buses indicates a total energy consumption of 1.40 kWh/km per bus, which yields an energy saving potential of only 11%. The ...



Trolley switch energy storage process

Trolley circuit breakers operate by using electromagnetic mechanisms, which allow them to store energy efficiently, distinctively through mechanical compression, and spring action; hence, it utilizes both ...



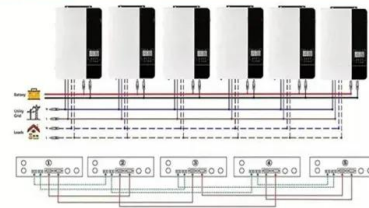
The car switch cannot store energy -Europe's Solar Ascent

Limited by their inability to store energy, switches cannot address these challenges. Instead, they sit in a supporting role, facilitating the deployment and management of energy from

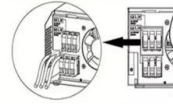


storage devices.

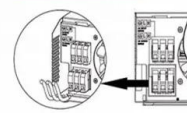
Parallel (Parallel operation up to 6 unit (only with battery connected))



AC input wires



AC output wires



trolley? :: Winter Survival General Discussions

They did say that the next update will make changes for the trolley switches so lets see how it goes :) It will, but we have to delay the update. We planned it for Friday (yesterday), but found ...

Storing energy and transferring energy , IOPSpark

Stretch the spring and hold it still. Then release the trolley. The unbalanced force will accelerate the trolley. In energy terms, the energy stored elastically ...



Why the Trolley Switch Cannot Store Energy: Key ...

That's essentially what happens when a trolley system's switch lacks energy storage capabilities. This article dives into why this matters, who cares about it, and how engineers are ...



Energy of a Trolley Attached to a Spring

In terms of energy: In order to change direction, the trolley needs to come to rest momentarily, having zero kinetic energy. However, the trolley already has kinetic energy as it is ...



TAX FREE

ENERGY STORAGE SYSTEM

Product Model
HJ-ESS-215A(100KW/215KWh)
HJ-ESS-115A(50KW 115KWh)

Dimensions
1600*1280*2200mm
1600*1200*2000mm

Rated Battery Capacity
215KWH/115KWH

Battery Cooling Method
Air Cooled/Liquid Cooled



THE HIGH VOLTAGE TROLLEY SWITCH DOES NOT STORE ENERGY

400v high voltage energy storage battery The grid energy storage system utilizes the 400V LiFePO4 batteries to assist in stabilizing the grid by storing excess energy from renewable sources like wind ...

WHY THE TROLLEY SWITCH CANNOT STORE ENERGY KEY ...

To support large regions increasingly dependent on intermittent renewable energy, Stanford scientists are creating advances in fuel cells, hydrogen storage, flow batteries, and traditional battery cells for ...



The high voltage trolley switch does not store energy

While the trolley switch itself remains energy-storage challenged, adjacent technologies are picking up the slack: Portugal's capital recently tested trolleys with roof-mounted solar panels.



Trolley switch energy storage process

Trolley circuit breakers operate by using electromagnetic mechanisms, which allow them to store energy efficiently, distinctively through mechanical compression, and spring action; hence, it utilizes both ...



Energy storage of trolley switch equipment

The retard energy may be transmitted to a bidirectional electric substation and returned to a utility grid. The retard energy may also be transmitted to an auxiliary energy storage system, such as an ...

Reasons why the switch solar container motor cannot store energy

Let's face it: the phrase "the trolley switch cannot store energy" sounds like something out of a steampunk novel. But in the world of urban transportation and electrical engineering, this limitation is ...



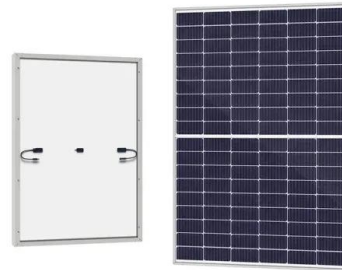
Energy storage of trolley switch equipment

Energy storage of trolley switch equipment
Retard energy regenerated from an electrical motor during braking action is reinjected into a power system via trolley lines. The retard energy may be ...



Solved 1. The switch dilemma (i.e., a trolley running out of , Chegg

The switch dilemma (i.e., a trolley running out of control down a track) can be used to illustrate moral Group of answer choices energy. force. strength. fortitude. intensity.



Why can't the switch store energy?

Limited by their inability to store energy, switches cannot address these challenges. Instead, they sit in a supporting role, facilitating the deployment and management of energy from ...

What is the 'Trolley Problem?' , Merriam-Webster

Next Stop: 'Trolley Problem' We have a hard decision to make. What to Know The trolley problem is a thought experiment in ethics about a fictional scenario in ...



EMPTY SWITCH CANNOT STORE ENERGY

At the heart of this issue lies the PC switch - those unassuming components in power converters that can't store excess energy. Recent data from the 2025 Gartner Energy Storage Report shows 68% of ...



the high voltage trolley switch does not store energy

The failure of electric energy storage is caused by motor failure, control switch damage, improper adjustment of travel switch, and open circuit of other parts of ...



Simple energy transfers involving motion , IOPSpark

Energy stored chemically (in food + oxygen) is now stored kinetically. Instead of a trolley you could, more impressively, use a student on a skate board (with due consideration to student behaviour and ...

How does the abb trolley switch store energy

One solution from the eMine offering is the ABB eMine(TM) Trolley System. Like a tram or a bus in a city, hauling trucks within the mine run on an electric trolley line and can thus reduce diesel ...



The reason why the switch cannot store energy

But for those designing substations, factory power systems, or renewable energy grids, understanding why a 6kV switch cannot store energy is as crucial as knowing not to lick a battery.



Reasons why the switch solar container motor cannot store energy

Let's face it: the phrase "the trolley switch cannot store energy" sounds like something out of a steampunk novel. But in the world of urban transportation and electrical engineering, this limitation is ...



**2MW / 5MWh
Customizable**

Why does the energy storage switch not store energy?

A favorable regulatory environment can also boost the growth of energy storage capabilities, allowing for advancements that may otherwise stagnate without systematic support. The ...



Trolley-Type Energy Storage: The Swiss Army Knife of Mobile Power

That's trolley-type energy storage in action - the unsung hero of flexible power management. As renewable energy adoption grows 23% year-over-year [8], these mobile systems ...

Contact Us

For catalog requests, pricing, or partnerships, please visit:
<https://folkowaakademianina.pl>