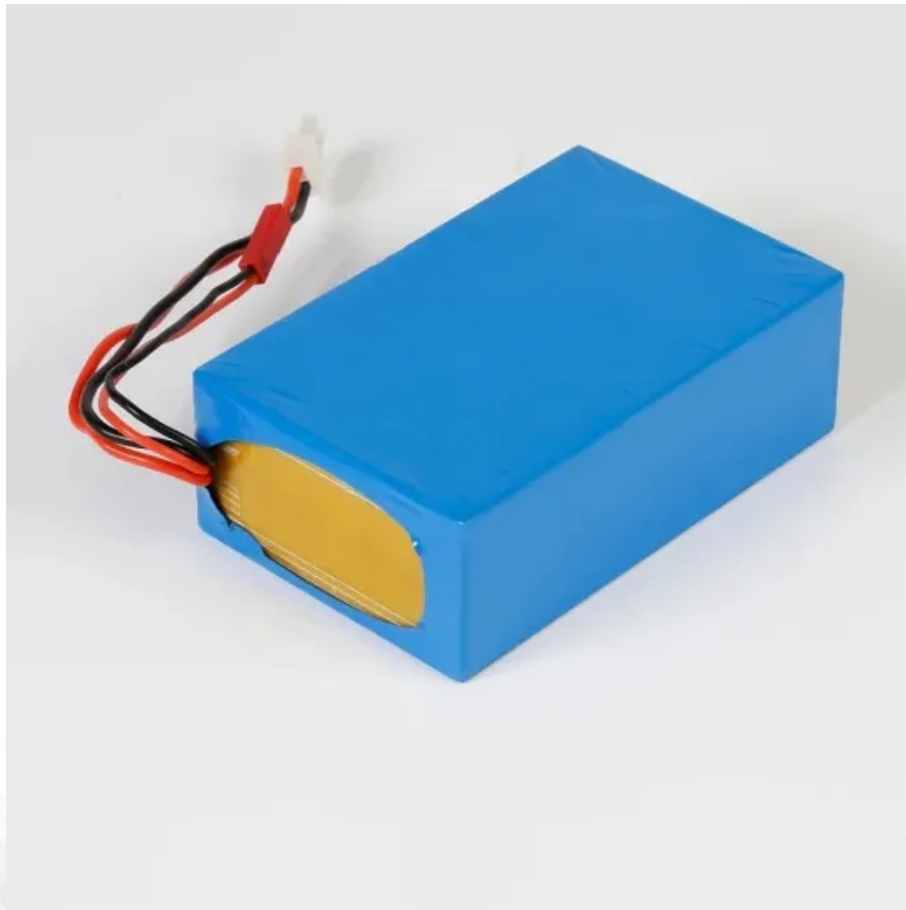


Is the e skill related to the efficiency of elemental solar container





Overview

The Elemental Skill — or Skill for short — is a Talent that does not require Energy to use but has a Cooldown period between each use. It is sometimes referred to as E (in reference to the corresponding default hotkey on PC). Energy Recharge amplifies energy gained from absorbing elemental particles and orbs. Pretty straightforward concept, but the math behind it?

That's where things get interesting. When a character is located at the locus of the Solar Isotoma, the Solar Isotoma will accumulate Geo power to form a crystallized platform that lifts the character up to a certain height. [com/r/EpicSeven/comments/a56f2u/guide_elemental_relation_and_type_of_hit/s/](https://www.reddit.com/r/EpicSeven/comments/a56f2u/guide_elemental_relation_and_type_of_hit/) I understand that Crushing Hit and miss hit chances might not be known to the newer player. If an Elemental Skill hits an enemy, Elemental Particles will be generated (with some exceptions such as Barbara or Noelle's Elemental Skill).



Is the e skill related to the efficiency of elemental solar container



Destiny 2: Elemental Empowerment Guide

Related: Destiny 2 Solstice of Heroes Armor Upgrades 2020 Edition So, that means you'll either get a Solar Orb, a Void Orb, or an Arc Orb. To fill up the status charge and get the buff, ...

Destiny Beta: Elemental Weapon Damage (Solar, Arc, Void) Explained

Destiny Beta: Elemental weapon damage didn't play a massive role in the beta, but it was definitely helpful if you knew how to use it. So, how DO you use it



Energy , Genshin Impact Wiki , Fandom

Energy is the resource used to execute Elemental Bursts. The amount of energy required for each Elemental Burst varies and can be checked in-game via the Skill Attributes section of a character's ...

Solar Matters III Teacher Page

ap rating cont 5. efficiency? Using the knowledge that you have about solar stills, draw plans for a solar still to be used for a family of four after a hurricane (assuming sunny days), that would provide each ...



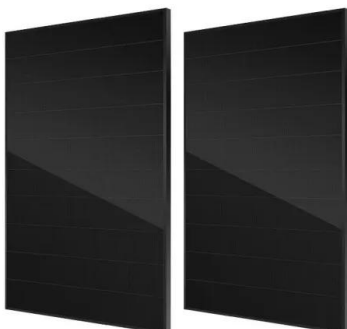
Energy , KQM TCL

Energy Recharge (ER%) is the multiplier that modifies how much Energy is gained from the incoming Elemental Particles/Orbs. It does not change how much Energy is generated via Elemental Skills. ...



Destiny Beta: Elemental Weapon Damage (Solar, Arc, ...

Destiny Beta: Elemental weapon damage didn't play a massive role in the beta, but it was definitely helpful if you knew how to use it. So, how DO you use it



Sources

During this phase the source specila effect will change to small dots spread out, the source is filling its container up, this will take 5 to 10 minutes. Sources with a Source stabilizer recover elements faster.



Solar , Roblox Elemental Battlegrounds Wiki , Fandom

Solar is a Superior Element / Fusion Element in Elemental Battlegrounds. Its color palette features a shiny gold-like tint and a bright-to-deep red gradient tone. Its ...



Energy Recharge Guide: 120-250% ER Requirements by ...

Energy Recharge amplifies energy gained from absorbing elemental particles and orbs. Pretty straightforward concept, but the math behind it? That's where things get interesting. All ...

Advanced uses of Kazuha's Elemental Skill (Combat & Exploration)

Tapping the Elemental Skill will applies 1 unit of Anemo. Holding will instead apply 2 units of Anemo. This matters greatly when considering a few factors.



Elemental Burst , Genshin Impact Wiki , Fandom

The Elemental Burst -- or Burst for short -- is a Talent that requires Energy to use and is usually more powerful than the Elemental Skill. In community circles, it is sometimes referred to as an "Ultimate" ...



User blog: SaudiPhilippines/Solar Analysis , Roblox Elemental

Solar is the most costly Element, costing about 4 thousand diamonds to get. It is well known in the community for having spells that do a great deal of damage, but also for having significant mana ...



Elemental Burst Guide , How to Charge Elemental Bursts Fast

Elemental Burst skills need Energy to be used. Energy is gathered by attacking and gathering Elemental Particles from either defeated enemies, or after using Elemental Skills in order ...

Quora

Quora is a place to gain and share knowledge. It's a platform to ask questions and connect with people who contribute unique insights and quality answers. This empowers people to learn from each other ...



All Skill Terms & Skill Level Up Priority In Genshin Impact

One such skill is called the Elemental Skill purely due to the fact that it always deals elemental damage. There are seven elements in Genshin Impact, and each character's elemental skill



PSA: Elemental Mastery and Reaction Support (Enabler) Characters

Probably only useful if your main DPS attacks fast enough that your DPS can apply their element between ticks of your enabler's skill. Since the character that causes the reaction depends on when ...



Elemental Skill

The Elemental Skill -- or Skill for short -- is a Talent that does not require Energy to use but has a Cooldown period between each use. It is sometimes referred to as E (in reference to the ...

Elemental Burst Guide , How to Charge Elemental Bursts Fast

Elemental Burst is a Special Skill in Genshin Impact. Read on to know more about Elemental Burst effects, cooldowns, and how to maximize their damage and effects in battle!



Contact Us

For catalog requests, pricing, or partnerships, please visit:
<https://folkowaakademiapianina.pl>