

Installed solar container capacity in 2035





Installed solar container capacity in 2035



Statistical Review of World Energy 2022

Solar and wind capacity continued to grow rapidly in 2021, increasing by 226 GW, close to the record increase of 236 GW seen in 2020. China remained the main driver of solar and wind capacity growth ...

Install & uninstall Google Earth Pro

To install or upgrade to the latest version of Google Earth Pro, download the application System requirements In order for Google Earth Pro to run on your computer, you must have all minimum ...



H1 2025: China installs more solar than rest of the ...

In the first half of 2025, the country installed more than twice as much solar capacity as the rest of the world combined, accounting for 67% of global additions.

Solar Market Insight Report 2024 Year in Review - SEIA

We expect cumulative US solar capacity to more than triple from 236 GWdc installed at year-end 2024, to 739 GWdc installed by 2035, with average annual capacity additions of more than



...

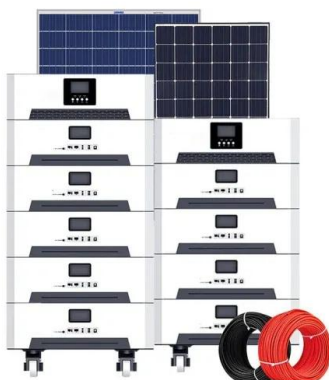


Cost Projections for Utility-Scale Battery Storage: 2023 Update

However, not all components of the battery system cost scale directly with the energy capacity (i.e., kWh) of the system (Ramasamy et al. 2022). For example, the inverter costs scale according to the ...

Global renewable power installed capacity to surge to 11.2TW by 2035

Driven primarily by declining costs and strong policy support, particularly for solar PV and wind energy, the global renewable power installed capacity is estimated to surge from 3.42TW in ...



Renewable Capacity Highlights 2025

Renewable power capacity growth (GW)
Renewable power capacity increased by 585 GW (+15.1%) in 2024. Over three-quarters of the capacity expansion was due to solar energy which witnessed an ...



Global Market Outlook For Solar Power 2023

As a consequence, total global installed solar capacity crossed the Terawatt threshold in early 2022 and amounted to almost 1.2 TW by the end of the year, with a 25% increase compared to 2021 levels.



Why carbon monoxide (CO) alarms don't need to be installed near the

Why CO alarms are often installed near the floor Standalone carbon monoxide alarms are often placed low on the wall because they need to be plugged into an outlet that's near the floor. CO alarms can ...

OPERATION AND MAINTENANCE MANUAL FOR DIESEL ...

1.1.General Instructions Before installing or running the generator set, it is a responsibility for the user or operator to read the whole documentation that is included within the generator set. ("Generator Set ...



How to find out the recently installed app

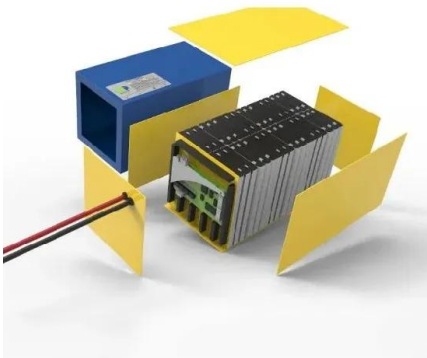
Tap "Installed." The list of recently installed apps will be displayed at the top of the screen. 2. Check your device's settings Another way to find out recently installed apps is to check your device's settings. To ...





Reinstall & re-enable apps

On your Android device, open the Google Play app . On the right, tap the Profile icon. Tap Manage apps & device Manage. Select the apps you want to install or turn on. If you can't find the app, at the top, ...



Install and manage extensions

For additional protection when you install a new extension from the Chrome Web Store, you can use Safe Browsing's Enhanced protection. If you enable Enhanced protection in Chrome, it warns you ...

Contact Us

For catalog requests, pricing, or partnerships, please visit:
<https://folkowaakademiapianina.pl>