

How big are the screws for lithium battery solar container





Overview

The terminal and bolt sizes are metric and the numerical signifier is the dimension in mm. So when people build their banks with large LFP cells which come with these relatively small M4 terminal screws, what is the thinking on terminals?

for instance my existing battery cables (to charger, breaker, load) are 2 gauge or some even bigger and have the clamp terminals on them. How to properly tighten screw terminals on lithium batteries?

Hello People, im building a small solar system for my fathers garden, 2x 100W Panels, MPPT Charge controller, 200Ah 12V LiFePO4 battery and a 3000W Inverter. Rebling feed-throughs are the lowest cost terminals for 100 Ah to 10 kWh lithium batteries. Our TFT-style terminal (without mounting ears) is the most economical, smallest footprint, simplest environmental seal, battery terminal which can reduce connector costs on a single microgrid energy storage.



How big are the screws for lithium battery solar container



Battery terminals / poles , DIY Solar Power Forum

Use with Class T Fuse Blocks for circuit protection of devices including inverters. high interrupt capacity for large battery banks including Lithium-ion and TPPL batteries.

How big are the screws for Micronesia lithium batteries

Many lithium battery manufacturers have changed the shell of lithium-ion batteries from plastic shells to aluminum shells, increasing the energy density. The positive and negative terminals of the lithium ion ...



20ft 2MWh Outdoor Liquid-Cooling lithium ion battery ...

20ft 2MWh Outdoor Liquid-Cooled Li-ion Battery Container: Advanced thermal management, weatherproof design. Ideal for renewables, grid support, and peak ...

What Batteries Are Solar Containers Using? A Down-to ...

If you're looking to invest in a solar container--be it for off-grid living, remote communication, or emergency backup--here's one question you cannot ...



What size terminals and bolts come on RELiON batteries? , RELiON

RELiON's LiFePO4 batteries feature M6, M8 or M10 terminals. These types of terminals are insert terminals, also referred to as internal threads, and come with bolts.

How to properly tighten screw terminals on lithium batteries

Generally you put the terminals directly onto the battery for the best contact, then a washer, lockwasher if you have it, then put the bolt through and tighten down. Don't tighten as much ...



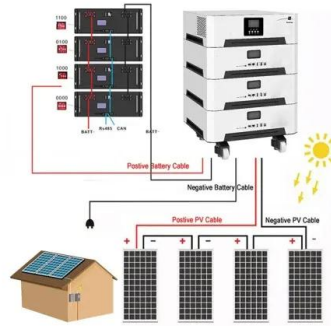
Stainless steel bolts and nuts for battery terminal connectors

I want to replace the bolts and nuts on my Lead acid battery terminals. All the local stores sell stainless steel ones and I've read about them having low conductivity. What material would you ...



Solar Off-Grid Lithium Battery Banks & Backup Systems , BigBattery

BigBattery provides lithium-ion battery packs that are perfect for powering any off-grid solar application. Browse our products today to find what you need.



LFP 12V 100Ah

How to Build a Solar Battery Box: A Comprehensive Guide for Energy

Key Takeaways Essential Tools: Gather crucial tools like screwdrivers, a drill, a wire stripper, a soldering iron, and a multimeter to successfully build your solar battery box. Battery ...

What is the thread size on a 50AH Lifepo4 battery?

Bought a Lifepo4 battery, 12VDC, 50AH, but it came without terminal screws. Can someone tell me the thread size or do I have to take the battery to the hardware store and find ...



TAX FREE

Product Model
HJ-ESS-215A(100KW/215KWh)
HJ-ESS-115A(50KW 115KWh)

Dimensions
1600*1280*2200mm
1600*1200*2000mm

Rated Battery Capacity
215KWH/115KWH

Battery Cooling Method
Air Cooled/Liquid Cooled



Renogy 170ah Lithium battery posts are too big for my lugs. : r/solar

Discussion of solar photovoltaic systems, modules, the solar energy business, solar power production, utility-scale, commercial rooftop, residential, off-grid systems and more. Solar photovoltaic ...



Contact Us

For catalog requests, pricing, or partnerships, please visit:
<https://folkowaakademiapianina.pl>