

High voltage ring main unit cannot store energy electrically





Overview

Power flows through a high-voltage main line arranged in a ring configuration, branching out through high-voltage switches to various distribution points. This circular topology offers a unique advantage: each distribution branch can draw power from either side of. In modern power systems, ensuring the stability and reliability of the electricity supply is essential. This article provides a detailed analysis of the RMU 's working principle, including its definition. Energy storage at high voltage normally requires the use of electrolytic capacitors for which th ESR varies considerably, particularly over temperature.



High voltage ring main unit cannot store energy electrically



Working principle of high-voltage ring main unit

Such a ring main unit can also be used in a non-ring network structure power distribution system, so with the widespread application of this ring main unit. "High-voltage ring main unit" jumps ...

XGN2-12 Ring Main Unit (RMU) - Metal-Enclosed High Voltage ...

The PINEELE XGN2-12 Ring Main Unit (RMU) is a high-performance, metal-enclosed switchgear solution designed for 12kV medium-voltage indoor systems. With its SF6 insulation, ...



What is the Purpose of an RMU? -- A Comprehensive Guide to Ring Main

A Ring Main Unit (RMU) is a type of compact, sealed switchgear used in medium-voltage power distribution networks. The primary purpose of an RMU is to ensure the reliable, safe, and ...

Ring Main Unit (RMU)

Ring Main Unit (RMU) is a compact, gas-insulated switchgear solution designed for medium-voltage power distribution networks. It ensures safe, reliable, and efficient electrical power distribution in ...



Ring main unit cannot store energy

Even though the sockets are connected to two cables or 2.5mm and supplied by a 32 amp fuse or MCB it cannot be guaranteed that it is a ring main or final circuit. In most consumer units, a separate ...



What are the working principles and applications of high-voltage ring

Its core function is to achieve the distribution, control and protection of electric energy. It is suitable for urban power grids, industrial parks, commercial buildings and other places.



How does the ring main unit store energy? , NenPower

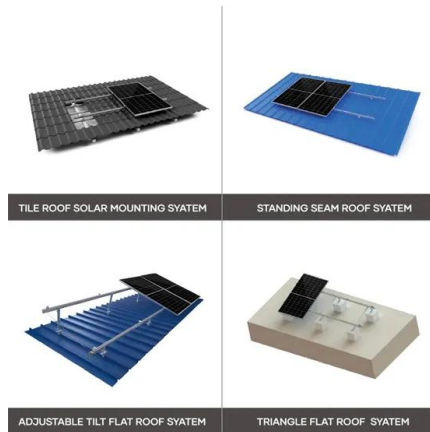
When integrated with battery storage systems, RMUs can not only manage energy flow but also store excess energy generated during low-demand periods. This allows for the utilization of ...





Ring main unit equipment cannot store energy

Ring Main Units (RMUs) are the unsung heroes of our electrical grids, playing a crucial role in managing and distributing electricity safely and efficiently. In this comprehensive guide, we'll unravel the ...

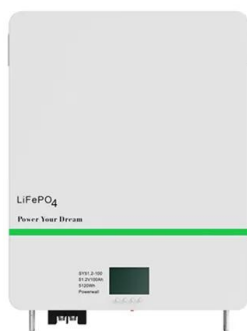


What does ring main unit energy storage mean? , NenPower

Ring main unit energy storage refers to an integrated system for energy management, consisting of **1. a ring main unit (RMU) that offers enhanced electricity distribution efficiency, 2. ...

Abb high voltage ring main unit energy storage

Main Unit Installation and Operating Instructions Product Overview ABB's type-tested SafeLink ring main unit (RMU) is an SF6 insulated RMU utilising the latest BESS Battery Energy Storage ...



Ring main unit for smart grids , Schneider Electric

The ring main unit is a compact, fully enclosed, factory-built cabinet designed for medium voltage (MV) power distribution. This switchgear unit is straightforward ...



What is Ring Main Unit (RMU) , Explained , TheElectricalGuy

The video explains what is Ring main Unit (RMU) in electrical. Why we need the ring main unit RMU, what are the different parts of RMU, Single line diagram of RMU and many more things about the

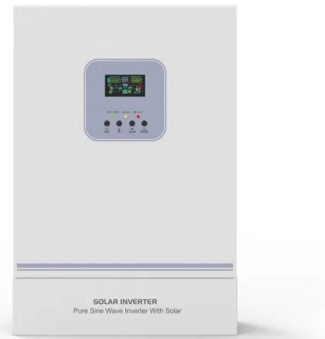


A Practical Guide to the Operation of Ring Main Units

Ring Main Units are compact modules that are gas-insulated and sealed, comprising main switching devices and ancillary components to ensure continuous secondary power distribution.

What Is a Ring Main Unit (RMU)? Functions and Operating Principles

Explore what a Ring Main Unit (RMU) is, how it operates within a looped distribution network, and why it's become an essential component in modern, compact, and reliable power systems.



ring main unit cannot store energy electrically

Ring Main Units (RMUs) are the unsung heroes of our electrical grids, playing a crucial role in managing and distributing electricity safely and efficiently. In this comprehensive ...



WHAT IS A RING MAIN UNIT WORKING PRINCIPLE

This article explores the fundamental principles of high-voltage power transmission, focusing on its advantages for efficient long-distance energy delivery, and examines the impact of voltage levels on ...



WHAT IS A RING MAIN UNIT WORKING PRINCIPLE

Abb high voltage ring main unit energy storage ABB offers two GIS solutions: the ZX line rated up to 40 kA/5000 A and the SafePlus line up to 25 kA/600 A (ring main units).

High voltage ring main unit cannot store energy

China High Voltage Ring Main Unit wholesale - Select 2024 high quality High Voltage Ring Main Unit products in best price from certified Chinese High Performance manufacturers, High Frequency ...



Understanding the 10kV Distribution Ring Main Unit (RMU)

The 10kV distribution ring main unit is a vital component in medium-voltage power distribution systems. Its primary function is to ensure the safe and stable delivery of 10kV or even ...



About Ring Main Unit: The Key Equipment in Modern Power Distribution

In today's power distribution field, the Ring Main Unit (RMU) plays a crucial role. It is a factory-assembled metal-enclosed switchgear widely used in the power supply systems of various ...



Understanding the Role of Ring Main Unit (RMU) in Modern Power

A Ring Main Unit (RMU) is a compact, sealed, and metal-enclosed switchgear used in medium-voltage (MV) power distribution systems. Typically operating at 11kV to 33kV, RMUs form ...

MEDIUM VOLTAGE RING MAIN UNIT

SFA-RM units are designed for supplying reliable energy, protecting electrical equipment in secondary distribution networks up to 17.5 kV. SFA-RM units are the best solution for indoor/outdoor distribution ...



ring main unit cannot store energy electrically

Ring Main Unit as an important part of Secondary ... A Ring Main Unit (RMU) is a totally sealed, gas-insulated compact switchgear unit. The primary switching devices can be either switch disconnectors ...



Ring main unit working principle

The ring main unit is a crucial component in electrical distribution systems, ensuring a reliable and efficient supply of power. At its core, the unit operates on a simple yet effective principle: ...



Contact Us

For catalog requests, pricing, or partnerships, please visit:
<https://folkowaakademiapianina.pl>