

# Abb solar container circuit breaker hf type





## Overview

---

The breaker, designed to protect combiners, switchgear and inverters up to 1500V DC, is the latest addition to ABB's complete range of protection solutions for utility-scale solar plants. The SACE Tmax PV range of molded-case circuit-breakers and switch-disconnectors for photovoltaic applications offers an increasingly comprehensive, leading-edge solution that anticipates the market trends. All products are fitted to a DIN rail – the most effective arrangement for ensuring efficient applications. A complete range of MCCB and MCS will be available up to 1000A for use at 1000V DC. The new chambers mean the arc extinction time can be reduced, the ed molded case.



## Abb solar container circuit breaker hf type

---



### **Circuit Breakers , ABB Electrification U.S.**

The SACE® Tmax® XT molded case circuit breaker (MCCB) range helps ensure extreme performance and protection features up to 1200 amps, globally certified UL/IEC/CSA

### **Molded Case Circuit Breakers (MCCB) , ABB Electrification U.S.**

The SACE® Tmax® XT molded case circuit breaker (MCCB) range helps ensure extreme performance and protection features up to 1200 amps, globally certified UL/IEC/CSA



### **Technical catalog ABB SACE molded case circuit breakers**

All ABB SACE circuit breakers in accordance with the UL 489 and CSA C22.2 Standard can be used in installations with wye or delta distribution systems since use of the circuit breaker at 480 V AC is ...

### **Solid-State Circuit Breaker**

The solid-state breaker concept replaces the traditional moving parts of an electromechanical circuit breaker with semiconductors and advanced software algorithms that control the power and can ...



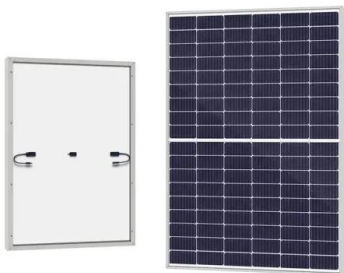
### High-voltage circuit breakers | reliable protection

Explore our gas-insulated high-voltage circuit breakers designed for grids, urban, offshore, and renewable energy projects. Discover reliable and innovative solutions.



### Circuit Breaker Sizing Chart for Solar PV Installations 2025

Choosing the right circuit breaker for a solar PV system is critical. A circuit breaker protects the system from overloads and short circuits, preventing fires and damage to panels, ...



### CATALOG SACE Tmax for special applications Adaptability, ...

Circuit-breakers T4, T5 and T6 for motor protection are perfectly integrated with the ABB range of contactors-thermal relays, thereby allowing extremely simple and compact protected start ...



## ABBSales , ABB TMAX MCCBs, TMAX PV UL 489B circuit ...

TMAX PV circuit breakers are UL 498B compliant molded-case-circuit breakers (MCCB) rated up to 1000V dc, intended for use with photovoltaic systems. A complete range of MCCB and MCS will be ...



## PV

These circuit-breakers are able to break short-circuit current up to 32kA, depending on their size. With the added advantage that all products can be perfectly integrated with the electrical and mechanical ...

## ABB\_PV line protection\_2CDC002093B0203\_0510 dd

Miniature circuit breakers of these types are the optimum protection for cost-intensive system components. Their reset capability guarantees minimised downtimes, while the highest degree of ...



## Selection & reference guide Solutions for photovoltaic

Smaller PV systems are characterized by a limited number of strings. In this type of system, the short circuit current value on the direct current (DC) side is almost always limited, so overcurrent protection ...



## ABB circuit breakers for direct current applications

In addition, direct current is used in conversion plants (in-stallations where different types of energy are converted into electrical direct energy, e.g. photovoltaic plants) and, above all, in those emergency ...



## Outdoor SF6 Circuit Breaker

The circuit breaker is shipped in special packing cases in the open position with the springs discharged and with SF6 gas pressure corresponding to rated pressure in case of 36kV rated voltage and ...

## ABB announces new molded case circuit breaker for 1500V PV system

Reduces costs and improves equipment reliability for end-users of PV industry ABB, a Fortune500 corporation and the leading power and automation technology group, today introduced ...



## ABB launches molded case circuit breakers for higher voltage solar

The breaker, designed to protect combiners, switchgear and inverters up to 1500V DC, is the latest addition to ABB's complete range of protection solutions for utility-scale solar plants.



## ABB Launches Molded Case Circuit Breakers For Higher Voltage ...

The breaker, designed to protect combiners, switchgear and inverters up to 1500V DC, is the latest addition to ABB's complete range of protection solutions for utility-scale solar plants.



## Circuit Breakers and Switches , Schneider Electric ...

Circuit breakers come in various types and sizes to suit different applications, from residential electrical panels to industrial settings. Types of circuit breaker?

### resources.news.e.abb

ABB is adding an advanced, new molded case circuit breaker (MCCB) for higher-voltage solar power plants to its Tmax PV range. The breaker, designed to protect combiners, switchgear and inverters ...



## Solar String Combiner Boxes

ABB also offers prewired solar combiner boxes with not only string protection, surge protection and disconnection but also with additional monitoring devices. The monitoring device CMS PV collects all ...



## Molded Case Circuit Breakers , ABB Molded Case Breakers , RS

Molded case circuit breakers are a widely employed type of circuit breaker. These devices are designed to either open or close a circuit and automatically break the connection when a predetermined ...



### Efficient Higher Revenue

- Max. Efficiency 97.5%
- Max. PV Input Voltage 600V
- 150% Peak Output Power
- 2 MPPT Trackers, 150% DC Input Overvoltage
- Max. PV Input Current 15A, Compatible with High Power Modules

### Intelligent Simple O&M

- IP66 Protection Degree: support outdoor installation
- Smart ITC Curve Diagnosis Function: locate PV string faults accurately and automatically detect faults
- DC & AC Type II SPD: prevent lightning damage
- Battery Reverse Connection Protection

### Flexible Abundant Configuration

- Plug & Play, UPS Switching Under 10ms
- Compatible with Lead Acid and Lithium Batteries
- Max. 6 units Inverters Parallel
- AFCI Function (Optional): when an arc fault is detected the inverter immediately stops operation

## Circuit Breakers , ABB Electrification U.S.

ABB's Circuit Breakers offering including Molded Cases, Miniature, Supplementary Protectors, Enclosed, Insulated Cases, Low and Medium Voltage, Remote Racking Devices, DC High Speed ...

## Contact Us

For catalog requests, pricing, or partnerships, please visit:  
<https://folkowaakademiapianina.pl>